

HANSON
ESTATES



ASKING PRICE

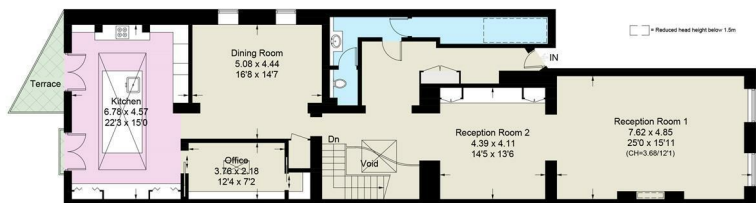
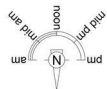
£9,950,000

Lowndes Square

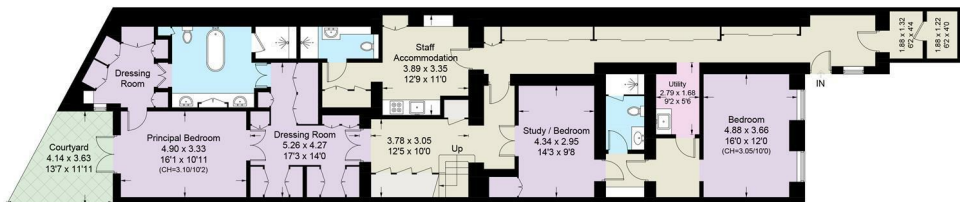
London, SW1X 9HB

Lowndes Square, SW1X

Approximate Area = 3847 sq ft / 357.4 sq m
Including Limited Use Area (35 sq ft / 3.3 sq m)

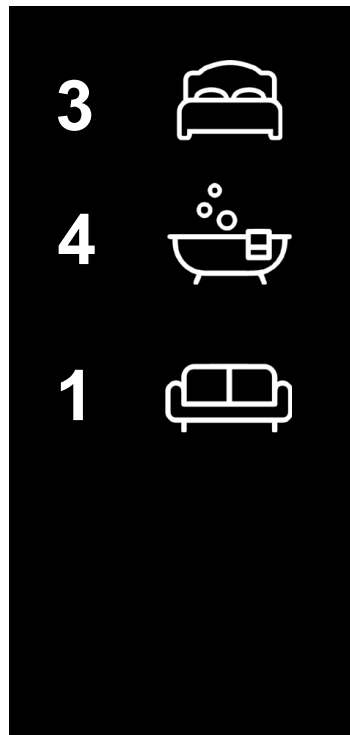


Ground Floor



Lower Ground Floor

This plan is for layout guidance only. Not drawn to scale unless stated. Windows and door openings are approximate. Whilst every care is taken in the preparation of this plan, please check all dimensions, shapes and compass bearings before making any decisions reliant upon them. (ID930427)



Energy Efficiency Rating

	Current	Potential
Very energy efficient - lower running costs		
(92 plus) A		
(81-91) B		
(69-80) C		
(55-68) D		
(39-54) E		
(21-38) F		
(1-20) G		
Not energy efficient - higher running costs		
England & Wales	EU Directive 2002/91/EC	



Agents Note: Whilst every care has been taken to prepare these particulars, they are for guidance purposes only. All measurements are approximate and are for general guidance purposes only and whilst every care has been taken to ensure their accuracy, they should not be relied upon and potential buyers/tenants are advised to recheck the measurements

HANSON ESTATES

OFFICE ADDRESS

Mayfair 23 Berkeley Square
Mayfair
Westminster
W1J 6HE

OFFICE DETAILS

020363354444
aaron@hansonestates.com